



Gifts to nourish the soul



At essenze, we believe in the extraordinary creativity of our small nation. In every artifact we seek a balance between the processes of art, design and craft. This, together with the individual language of each designer, connects us to our special place here in New Zealand.

Our culture is our identity which we can select to express and celebrate through objects, belongings and items of comfort in our homes - designed and made in New Zealand. This is what we offer at essenze.

At this time of year, it's a good time to consider unique pieces carefully matched to your chosen recipient for Christmas. We take great delight in assisting you to give gifts with real meaning. To make your pre-Christmas rush smoother, we invite you to view the essenze catalogue for a whole world of design that needn't cost the earth!

Come in and visit us in store in Parnell - we will be open extended hours leading up to Christmas. Or visit us on-line at www.essenze.co.

Thank you for your support in 2011.

Kia Kaha from Clare and the team of essenziels!



*Product and Nature
Photography by Stuart Hill*





2



3

Hand carved after being slipcast in fine bone china, these delicate functional bowls suit classic and contemporary minimal settings. From \$110.



4

The blown bird bottles are part Venetian, part 50's inspired, in stunning, striking colours. From \$395.



5



6



7

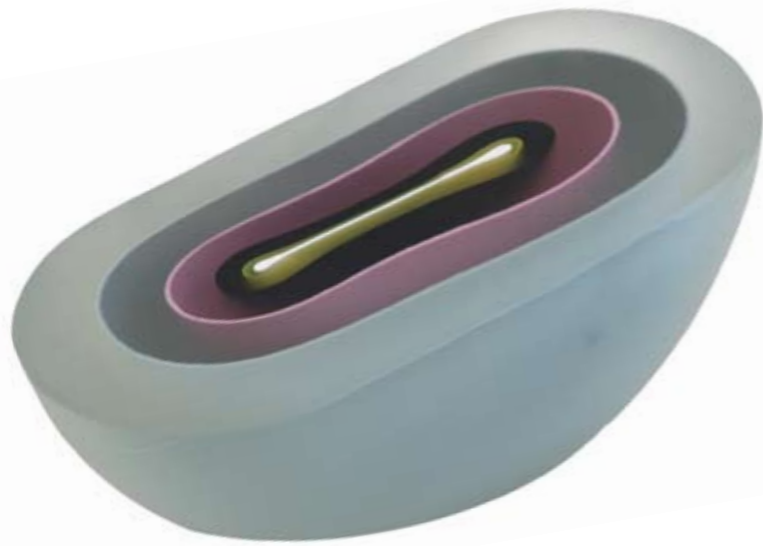
A selection of slightly weird and wonderful imagery that make you smile. Available in A4 or A5, framed or unframed, from \$24.



8

9

*Handblown, layer upon layer, then cut, then etched.....
these tactile, fascinating objects are in subtle or sumptuous
colours that just make you want to eat them!
Podettes start at \$275.*



10



11



12



13



14



15

Our birds, flora and fauna are seldom captured with more sensitivity than Leannes's painted oars.

Whether the original, or the carefully printed limited edition, they move you to the core.

Prices start at \$49 for the small framed prints.



Objects made with love.... actually with blood, sweat and tears.

Glass can be deceiving. While it looks so weightless and elegant, you don't see the years it takes to train and develop a signature style. But as you can see, the end result is so very worth it.

Many pieces in store, from \$49.



16



17



18



19



20



21



22



23



24



25



26



27

Enchanting ovoids, bottles and orbs, hand-thrown by one of New Zealand's most acclaimed potters, Peter Collis. In an array of delicious colours and styles, they add personality to any style of room. From \$99



28

29

30



The magic of hand-thrown and slip cast ceramic objects allow function to be combined with a 'look' of soft, organic statement pieces. New Zealand has a strong tradition of ceramic makers, these are some of the current heros.





47

48



50

49



51



53

52

essenze is launching new lamps and accessories by MoAD. A collection of 'vintage made hip' silver tableware and lights, up-cycled to life in funky new colours. Daring, fresh and full of fun. Stock and availability varies as each piece is unique. Enquire for pricing.



54



55



56



59



60



57



58



61



62



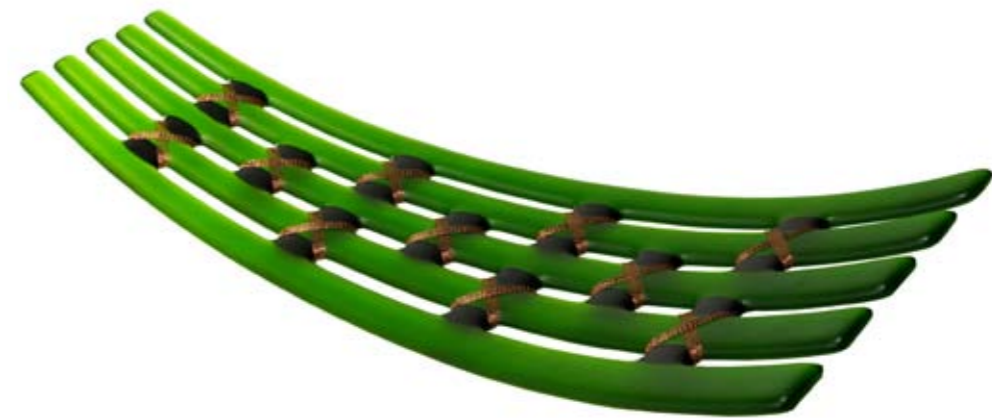
Fused and slumped glass is a medium that Te Rongo Kirkwood has selected to work with, but in reality any medium would work for this creatively talented, inspirational woman. Pieces from \$450



63



64



65



66



67



68

Who would have thought that macadamia nut shells could end up looking so clean, contemporary and funky? Kiln formed with natural resin and available in a full spectrum of beautiful colours, the Husque range is green, even when they are blue, yellow or red.



69

Bone china espresso and coffee cups, formed as if they had just been crumpled.



70



71



72



73



74



75



76



77



78



79



80



81



82



83



84



85



86



87



88



89



90



Our selection of essence whare and designer cushions is a mix of iconic New Zealand, funk and humour.



91

From a small studio just out of Nelson, David Haig steam bends Walnut or Sycamore in a process perfected over the years to create this stunningly elegant and balanced rocking chair.

Such a sight to behold and a pleasure to sit in. Pricing POA



Minimalistic, hand crafted fruit bowls and presentation platters in Rimu, Rewarewa and Kauri, putting a modern twist on wood and making the warmth work.

Range from \$35



A world of design that need not cost the earth.
There is plenty more where this came from, please enquire.

Under \$100



93



94



96



97



98



100



101



102



95



99

Under \$250



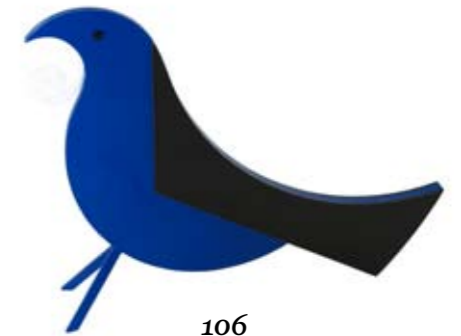
103



104



105



106



107



108



109



110



111

To proceed with your order..

We have done our best to make sure the ordering process is easy for you.

Each product in this catalogue is numbered so all you need to do is contact us via email or via our website with the product number of the piece(s) of interest. We will then send you a quote that can include freight nationally or internationally.

It is also important to note that we work with a lot of pieces that are handmade and may differ slightly to those shown. For these pieces, follow the same steps as above and we will send you images of the actual piece in stock that relates to the image in the catalogue. The piece emailed is the one you will then receive.

There are 3 ways to proceed:

1. Come and see us: [View address on Google Maps](#)

essenze	Opening hours:
223 Parnell Road, Parnell	Monday - Friday 9:30am-5:30pm
Auckland 1052, New Zealand	Saturday 9am-5pm (Xmas hours)
Phone: +64 9 3544520	Sunday 10am-5pm (Xmas hours)

2. Email us:

Simply email us at info@essenze.co with the number of the product you are interested in and we will get back to you with options on what is in store.

3. Visit our website:

Go to www.essenze.co/nz-designer-collections/ to see the full range of products in this catalogue and a whole lot more. Browse our product categories and click on a product to view more information. There is an enquire link on each of these product pages to get in touch.

Payment:

We can accept credit card payments over the phone or we can email you our credit card payment form. We can also accept payments via Paypal.

Shipping:

We regularly ship world-wide. We deduct the GST (15% inclusive in the quoted retail price) and add the freight cost.

We will send via track & trace courier on express rate to get to you for Christmas.

All shipments are fully insured.

Please note: essenze can not control the charges at the destination. There may be import GST/VAT and/or duty. We provide paperwork to assist with this process to ensure swift processing.

All items come gift wrapped and with an artist/designer profile.

